

ANAPA Range

Timings:

Monday	10H00 to 12H00 and 13H00 to 17H00
Tuesday	10H00 to 12H00 and 13H00 to 24H00
Wednesday	10H00 to 13H00
Thursday	10H00 to 12H00 and 13H00 to 24H00
Friday	10H00 to 12H00 and 13H00 to 15H00

4 aircrafts maximum are allowed to enter the range at the same time.

2 flights maximum at the same time

Weather conditions:

A colour code, is used to symbolise quickly the real time weather over the range.

The first colour of the morning is determined by the range officer so as to ensure better firing planning. The colour is modified all over the day with aircrew's information.

- **RED:** fire restitution is not possible. Only training runs with simulated firing can be performed
- **YELLOW:** allows exercise ammunition firing. Always followed by one or two digits indicating the lowest significant cloud layer base.
- **GREEN:** allow all ammunitions firing.
- **BLUE:** allows all ammunitions firing. This colour is also used even if some small clouds do not seem to interfere with aerial activity

X000M	RED	YELLOW	GREEN
5000M	RED	YELLOW	GREEN
2000M	RED	YELLOW	GREEN
1000M	RED	YELLOW	GREEN
500M	RED	YELLOW	GREEN
100M	RED	YELLOW	GREEN
Ground	RED	RED	YELLOW
Visibility km	0	1	5 8

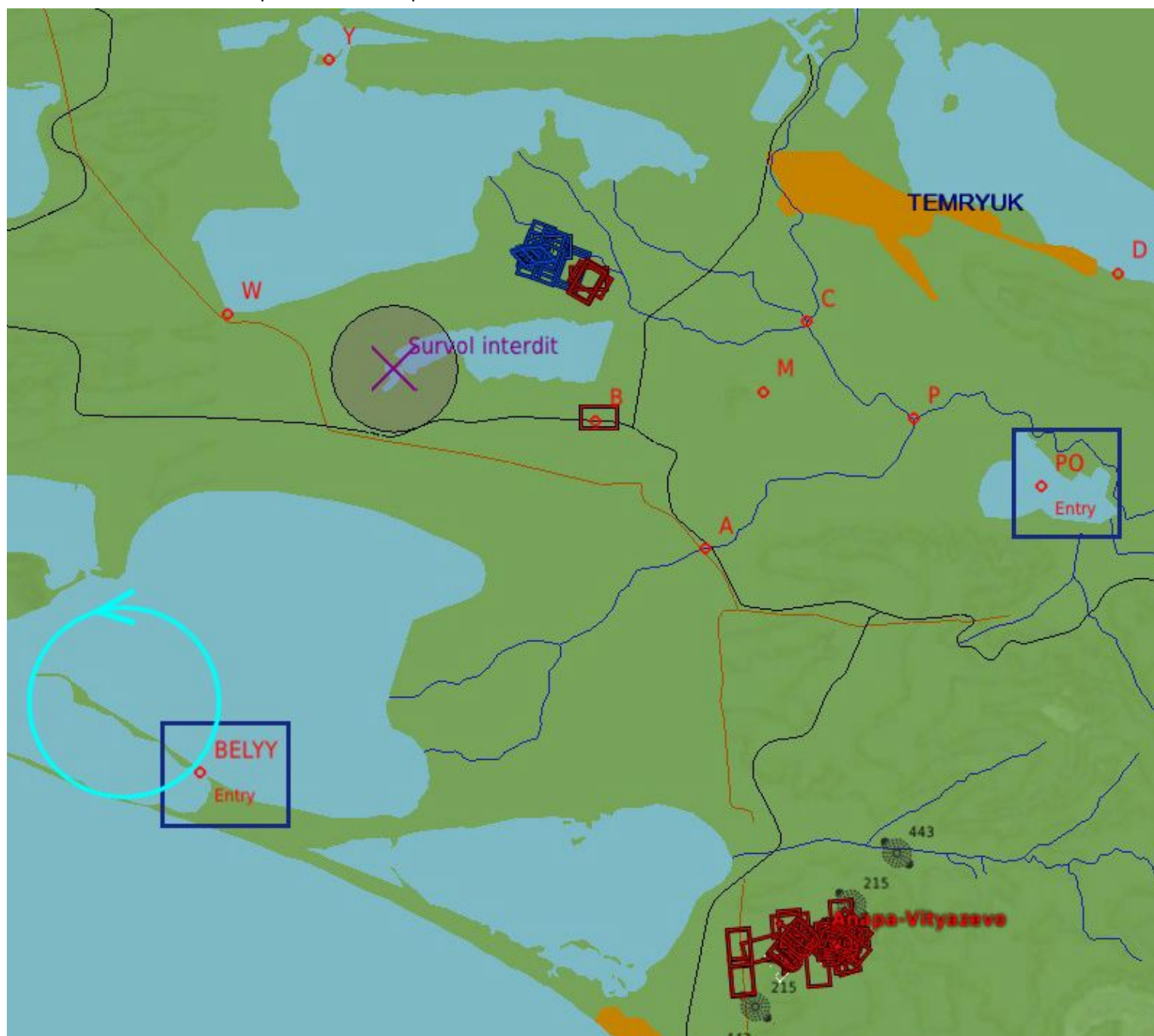
Radio:

Call Sign: ATTILA: Canal 7

IFF code: 3

Geographical characteristics (Areas, circuits and landmarks).

- The range is located 12Km north west of the village of TEMRYUK (30Km 340° from Anapa Air Base)
 - Patterns: in order to reduce noise disturbances and to ensure complete safety of air traffic, users of the firing range will scrupulously adhere to patterns and routing
 - Entries: South (BELYY) East (Papa Oscar) Depending on traffic at the firing range and on assignment of time slots, aircraft are directed either towards the holding pattern or towards the point of entry.
- ❖ Holding pattern:
- Contact ATTILA 2min from entry point
 - Entry point: BELYY
 - To the left at 1000m QFE
 - Indicated airspeed: 600Km/H if possible



❖ Low level entry:

- From BELYY day and VMC
 - Contact ATTILA 2min from entry point
 - To B or C descending to 200m GND for pop-up or skip attack or 500m for low toss delivery
 - To A descending To 50m GND for pop-up
 - Report B point, C, A (automatique)
 - Continue until pop-up point or turn point
 - Announce "IN" (Menu autre)
- From Papa Oscar day or night flight, VMC or IMC
 - Contact ATTILA 2min from entry point
 - To P descending to 500m GND for pop-up or skip attack
 - Report P point, C, (automatique)
 - Continue until pop-up point or turn point
 - Announce "IN" (Menu autre)

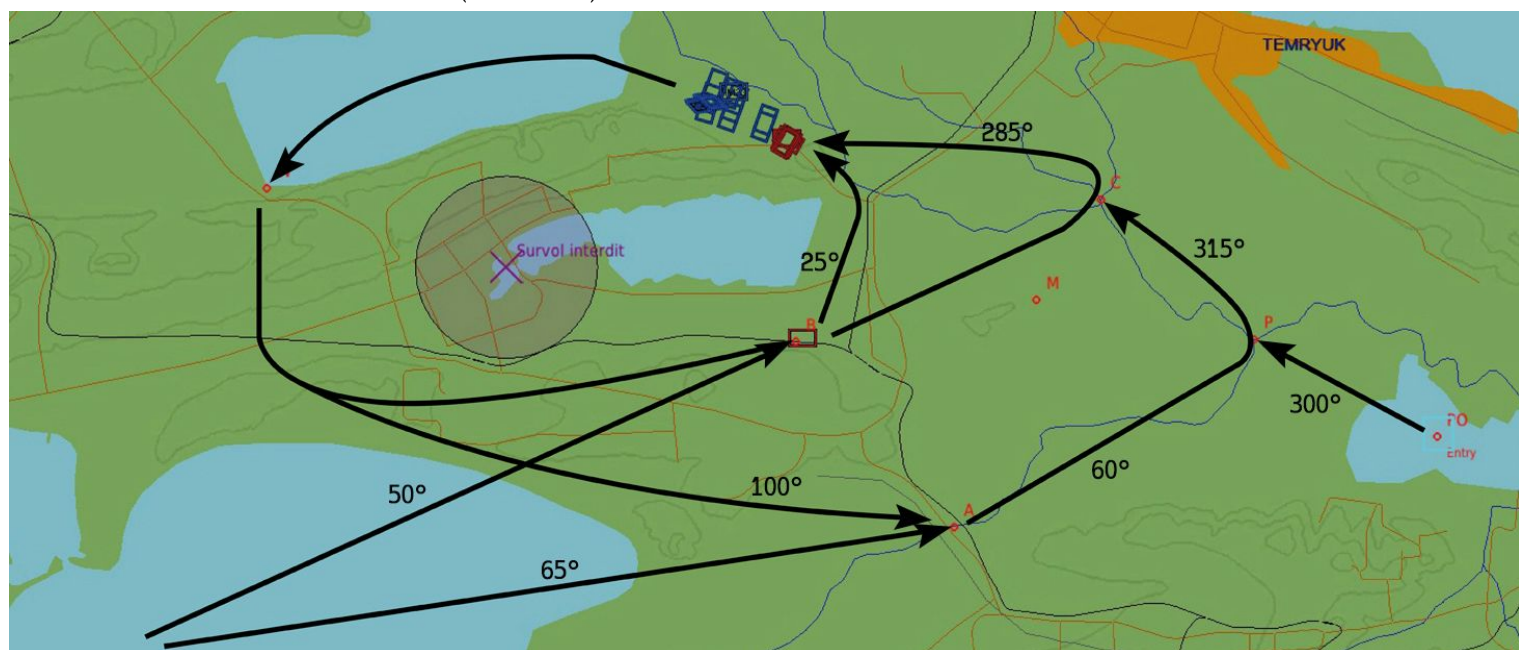
❖ Medium altitude :

- From 'Papa Oscar' day or night flight, VMC or IMC
 - Contact ATTILA 2min from entry point
 - To 'P' descending to 5000m or hight GND for skip attack
 - Report 'P' point, 'C', (automatique)
 - Continue until turn point
 - Announce "IN" (Menu autre)
- Nota: Noria MA/HA possible until 10000m.
 - After delivery, maintain 5000m mini then right turn to 'Y', 'D', 'C'
 - Announce "IN" (Menu autre)

❖ First run attack: At the end of the run, escape by W for south pattern or by Y for north pattern

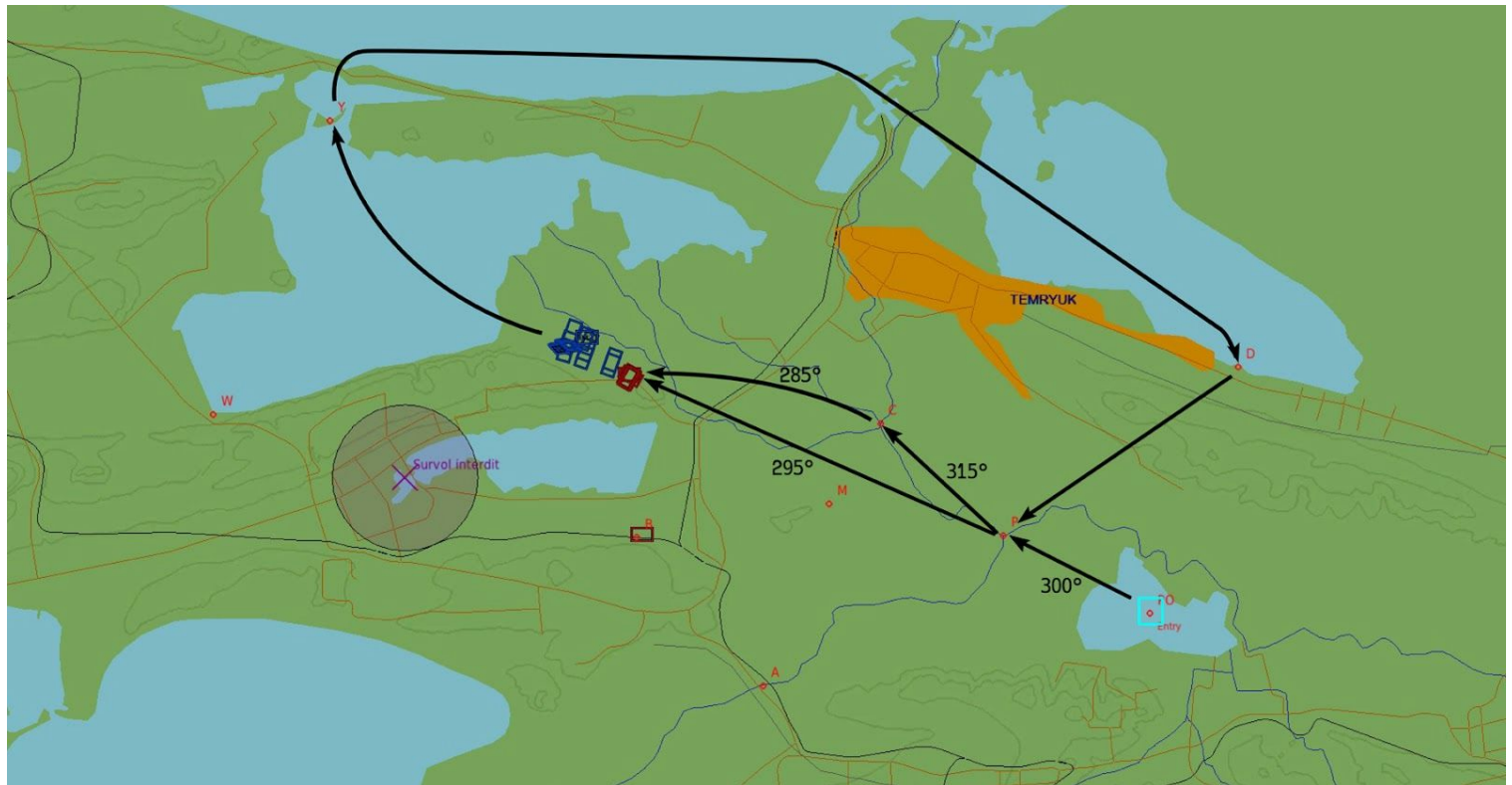
➤ South pattern

- Turn inbound W at 500m QFE and 700km/H max, then proceed to B or A
- To B: descending to 150m GND for pop-up or skip attack or 500m for low toss delivery
- To A: descending To 50m GND for skip attack or 500m for low toss delivery
- Report B point, C, A (automatique)
- Continue until pop-up point or turn point
- Announce "IN" (Menu autre)



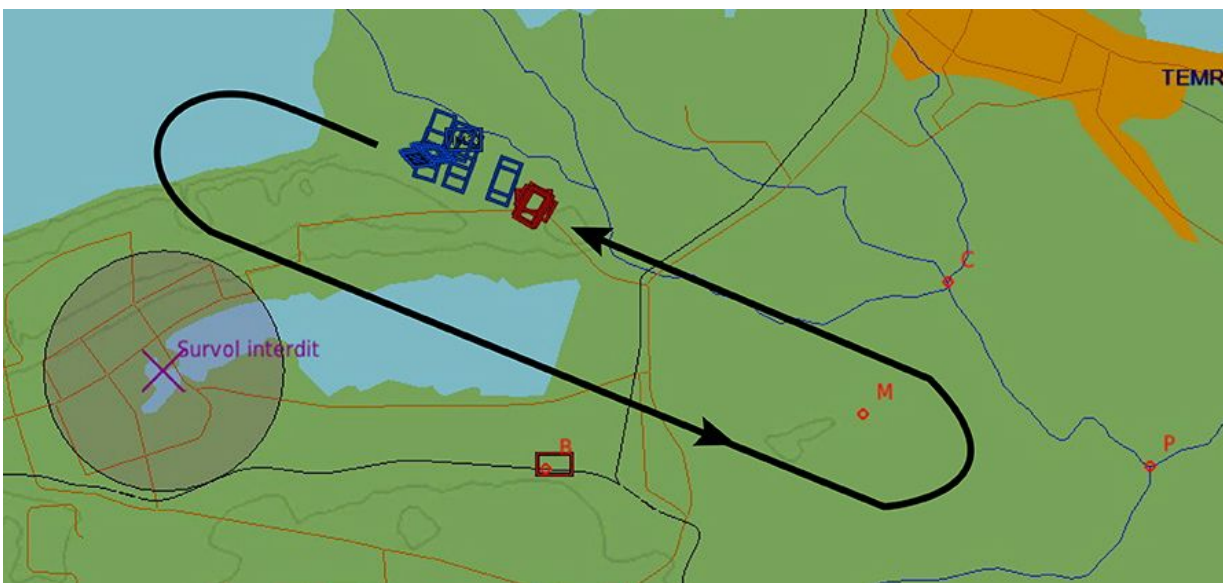
➤ North pattern

- Turn inbound Y and climb to 5000m QFE and 900km/H max, then proceed to D, C
- Report D point, C (automatique)
- Continue until turn point
- Announce "IN" (Menu autre)



➤ Gun Noria:

- At the end of the run:
- turn left heading 090
- Continue until turn point
- Announce "IN" (Menu autre)



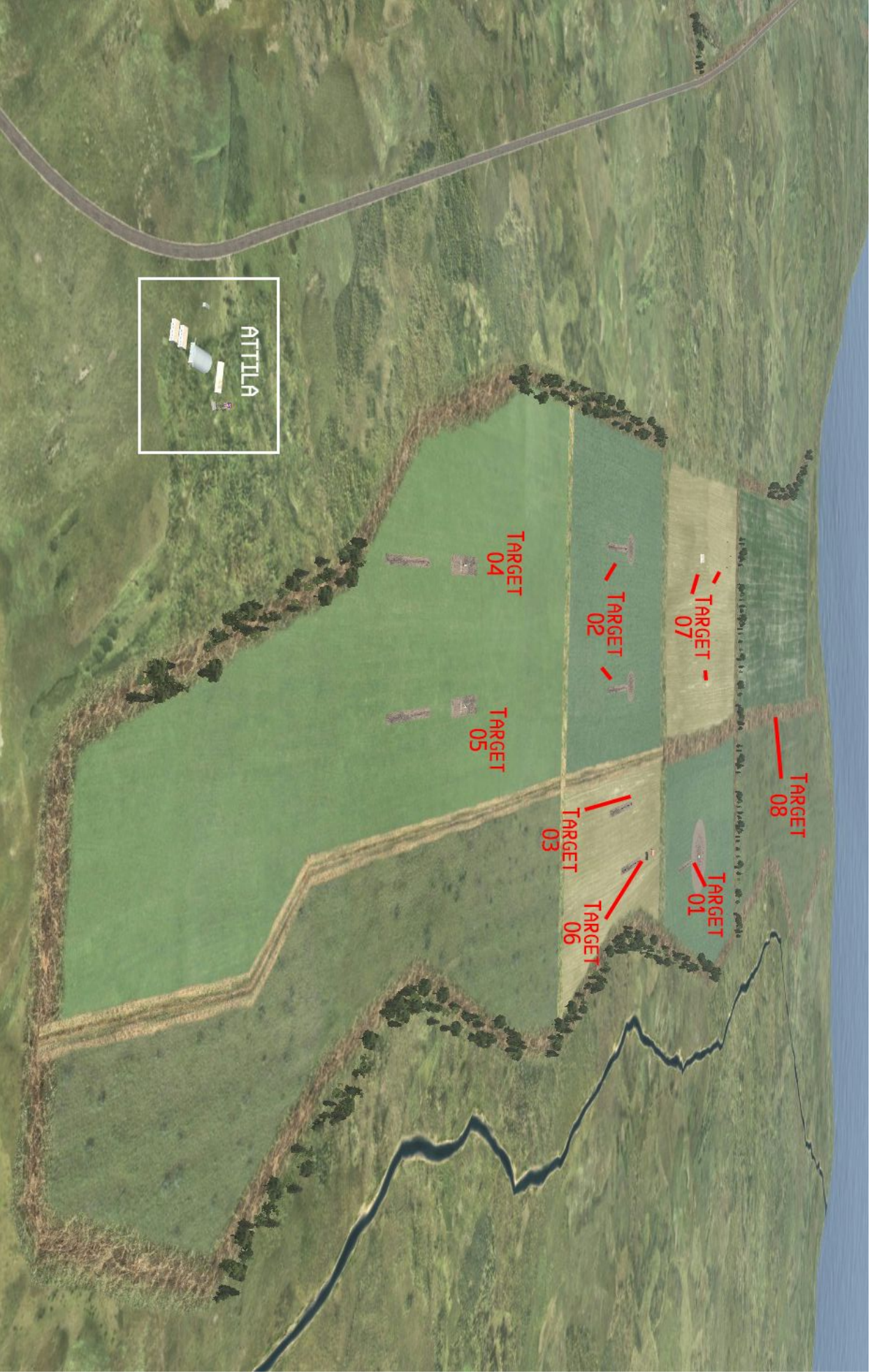
❖ Exit point:

- At the end of the run, escape by W
- Contact ATTILA and announced Strikes over
- Maintain 2500m
- Turn to the Entry point of Anapa

Targets

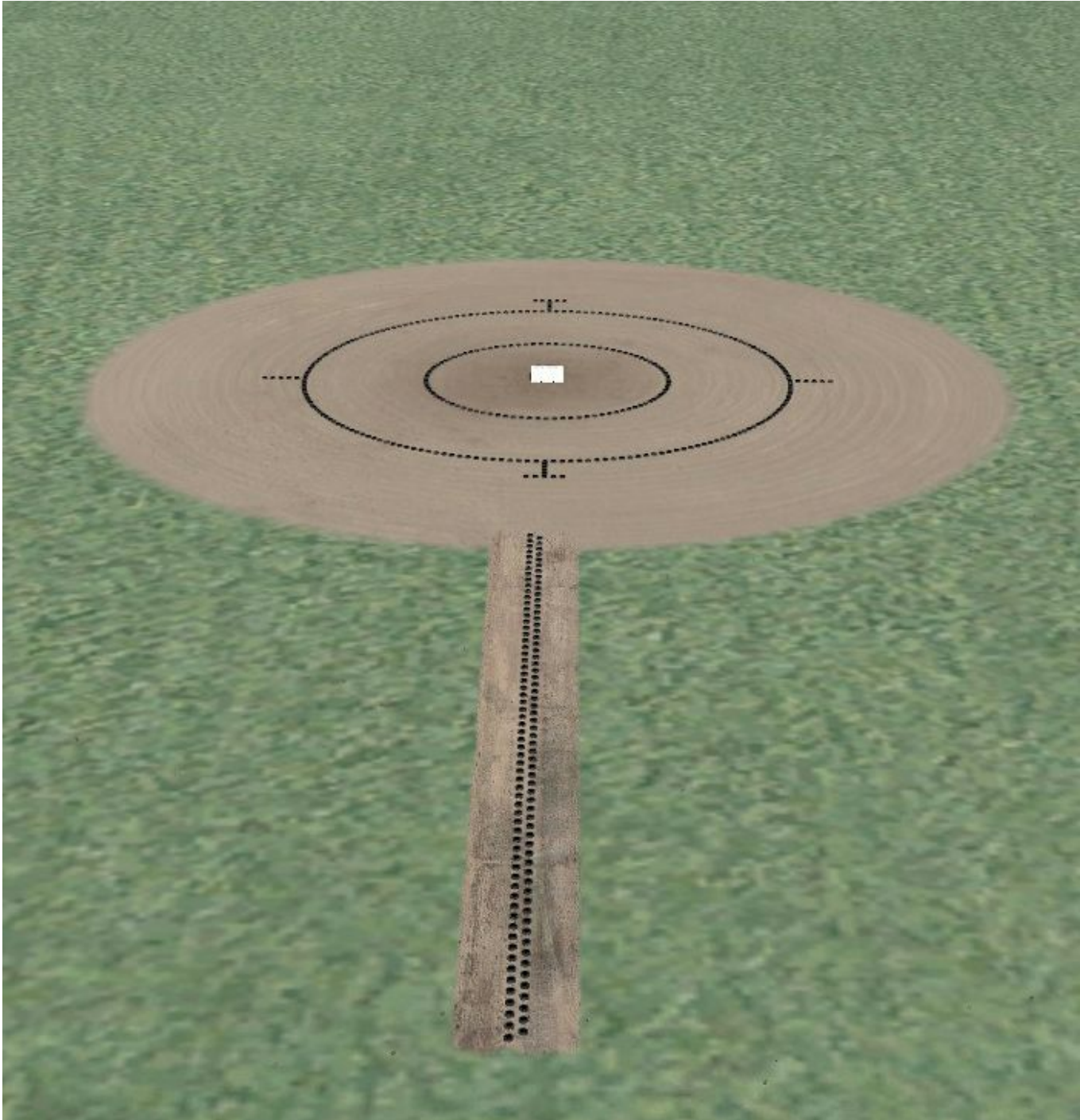


- ❑ Bulled: 04, 05 (SECAPAM), 07
- ❑ High drag bombs: 03
- ❑ Low drag bombs: 01, 02, 07, 08
- ❑ Roquets: 01, 07, 08
- ❑ Cluster bomb: 01, 07
- ❑ Missiles: 03, 06



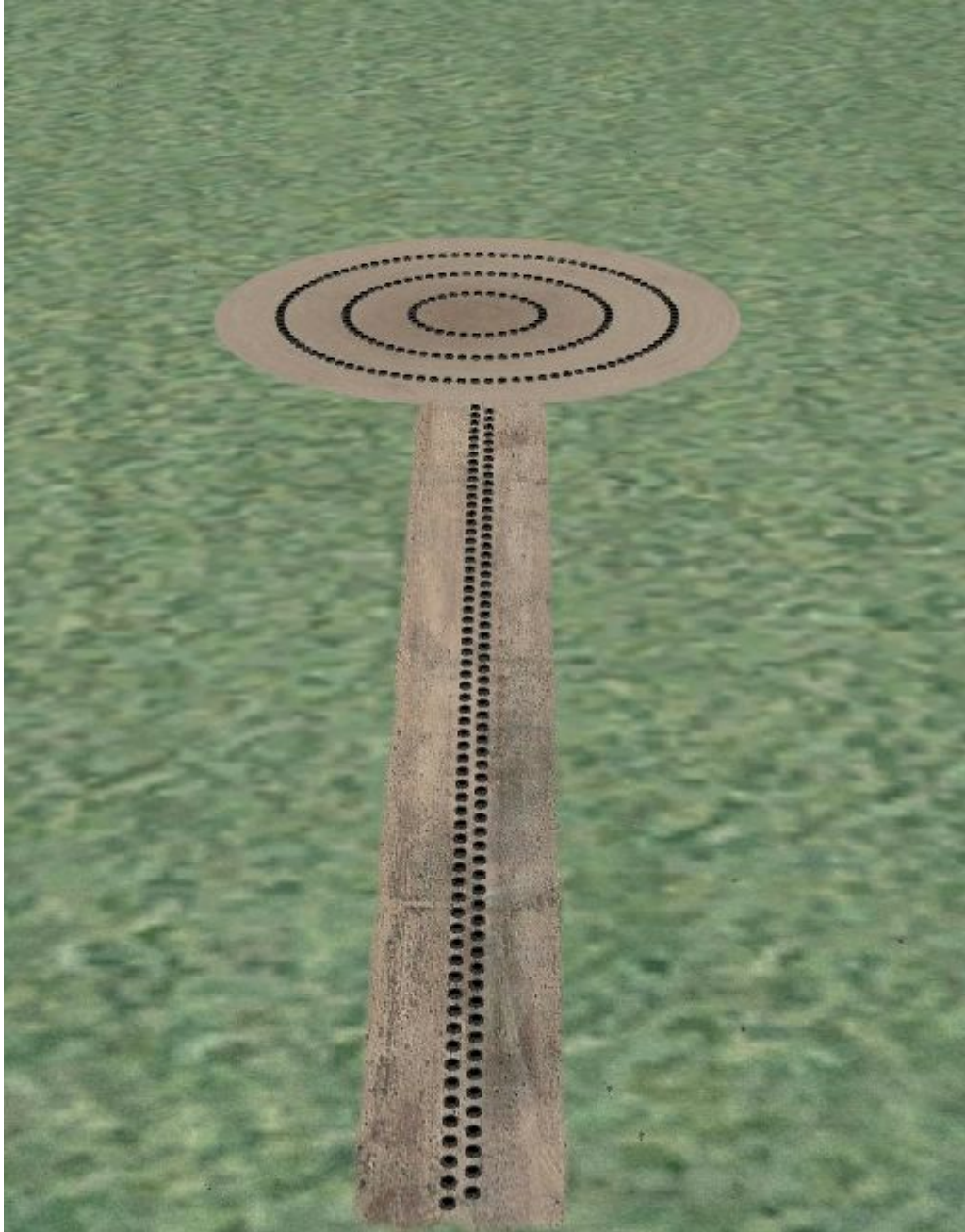
★ Target 01 (Low drag bomb - roquets - Cluster bomb, helicopter)

- Target dedicated for laser illumination from air
- One circle 100m radius
- A container is laying in the target's center
- Fire heading: $290 \pm 5^\circ$ and XXX°
- System delivery: manual or auto
- Pattern: all
- Scoring: visual bt RCO
- Laser ranging is authorized on this target



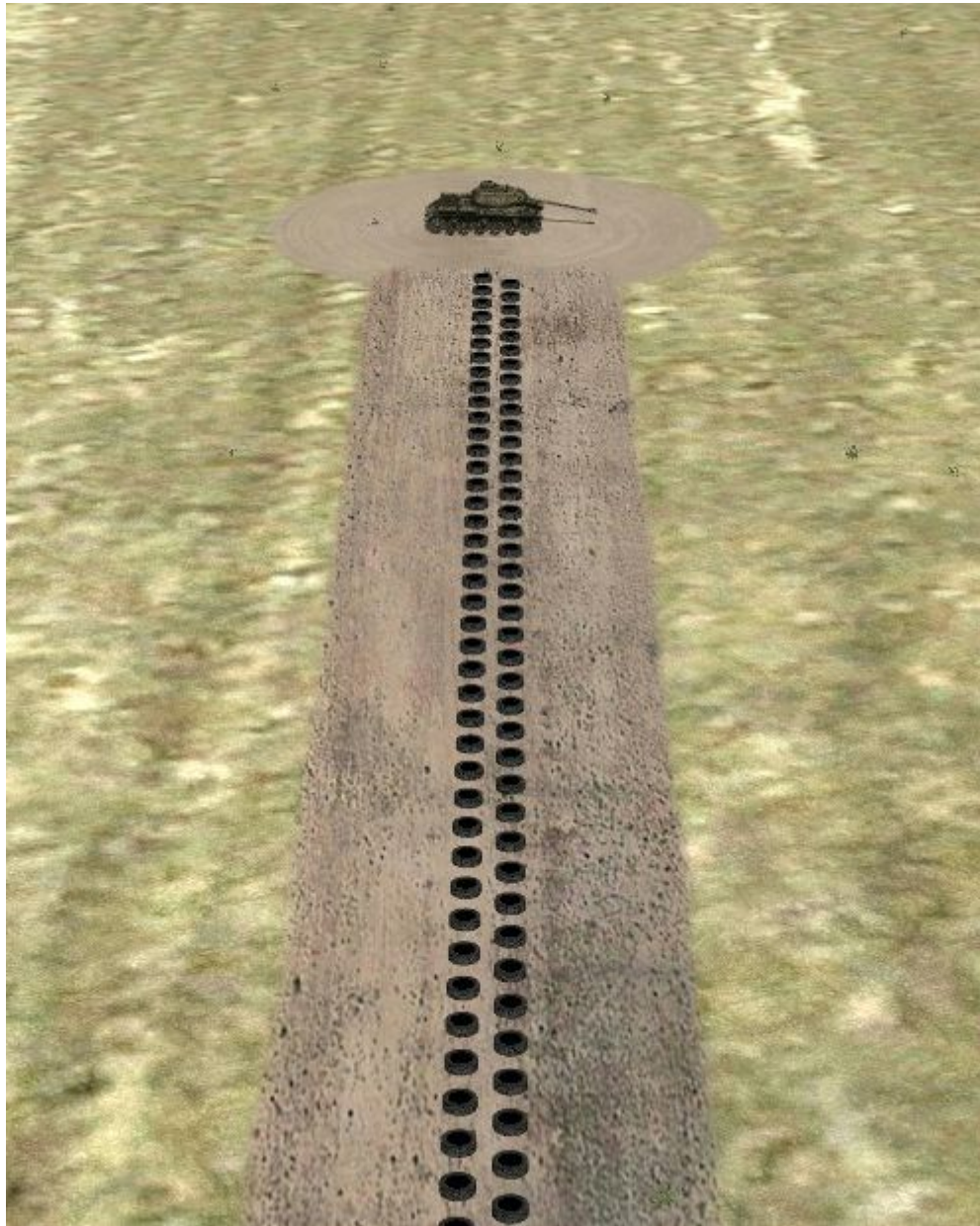
★ Target 02 - left and right (Low drag bomb, good weather and helicopter)

- Three circles 10m 30m and 50 radius
- Fire heading: $290 \pm 5^\circ$ and XXX°
- System delivery: manual or auto
- Pattern: all
- Scoring: visual by RCO
- Laser ranging forbidden on this target



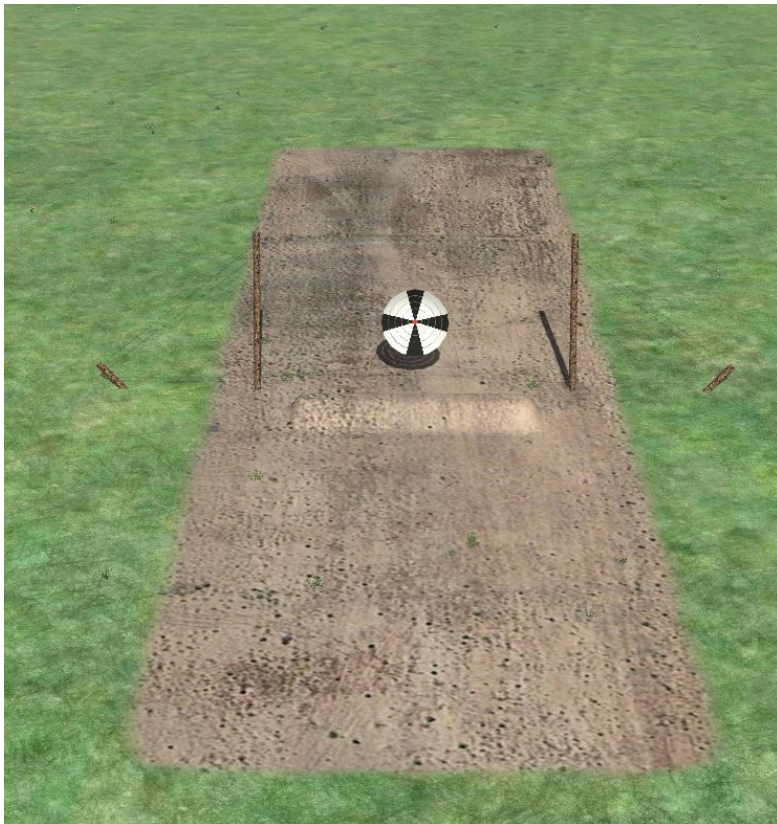
★ Target 03 (High drag bomb - Missiles - Laser)

- One circle 20m radius
- A tank is laying in the target's center
- Fire heading: $290 \pm 5^\circ$ and XXX°
- System delivery: manual or auto
- Pattern: all
- Scoring: visual bt RCO
- Laser ranging is authorized on this target



★ Target 04 and 05 (bulled)

- 2 targets SECAPEM
- Fire heading: $290 \pm 5^\circ$
- System delivery: manual dive 10° to 40° max
- Pattern: all



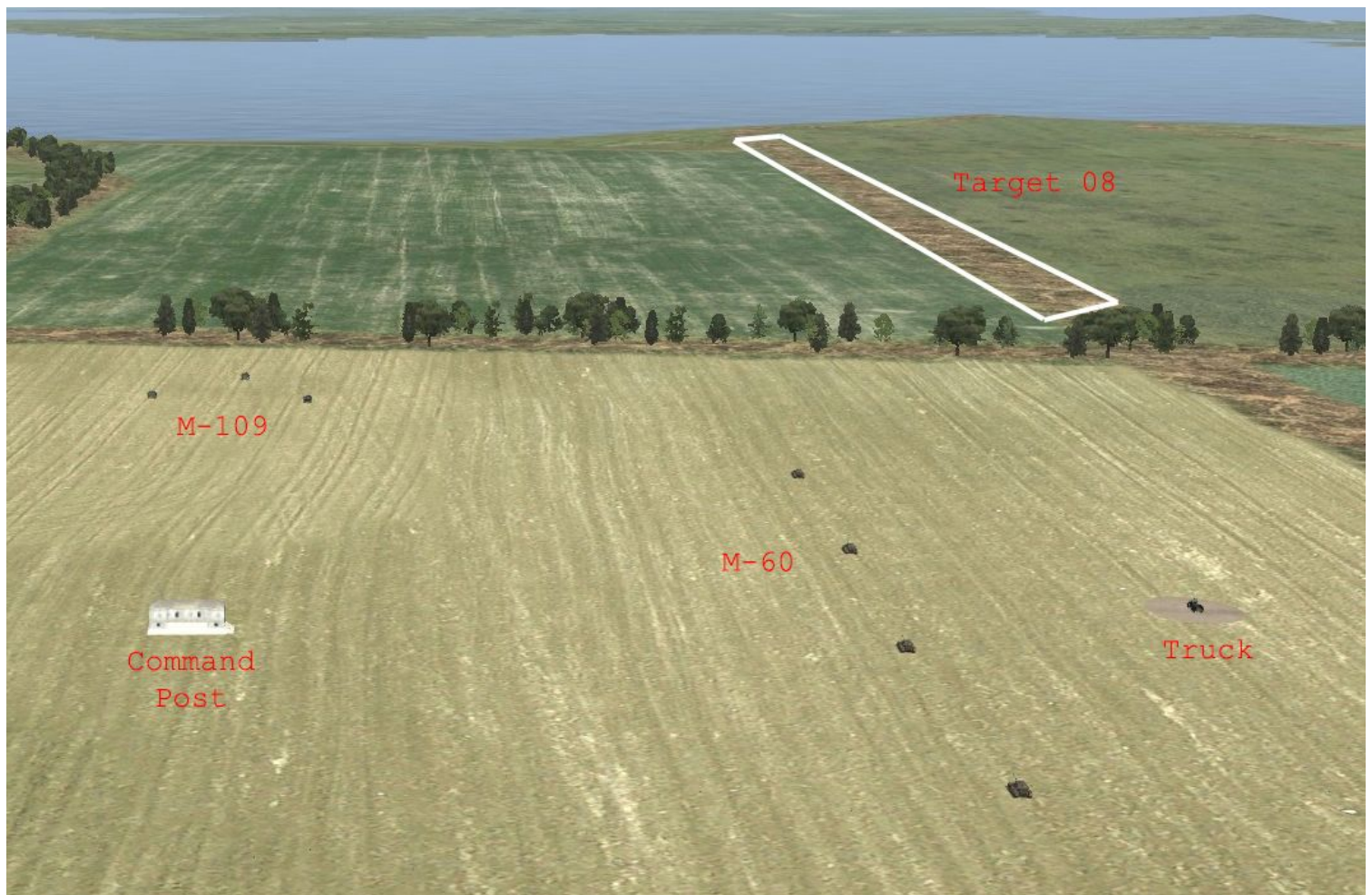
★ Target 06 (laser or radio target)

- Target dedicated to laser illumination from ground (from the RCO's tower) and air.
- 1 wagon with a container behind
- Pattern: all
- Scoring: visual by RCO



★ Target 07 (Low drag bomb Bulled, Cluster bomb Roquets and laser/radio illumination from air)

- 8 armored vehicles and a command post
 - 4x M60 spaced 100m and oriented 290°
 - 1x circle 20m radius with a truck in the target's center oriented 200°
 - 3x M-109 spaced 60m and oriented 290° (diamond)
 - 1x Command post
- System delivery: manual or auto
- Pattern: all
- Scoring: self-restitution



★ Target 08 (Low drag bomb, Cluster bomb Roquets)

- 1 runway
- System delivery: manual or auto
- Pattern: all
- Scoring: self-restitution

Restrictions

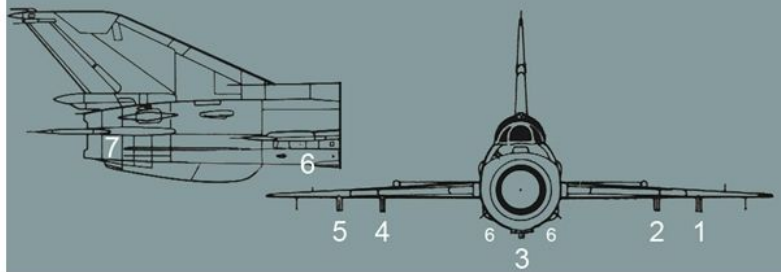
- Over flying below 1500m all villages is strictly forbidden

Aircraft procedures

- Gun
 - LAS (Low Angle Strafing)
 - Attack heading: XXX°
 - Dive angle between -5° and -20°
 - Double burst prohibited (Interne + extern)
 - 1 sec burst maximum
 - HAS (High Angle Strafing)
 - Target 6 only
 - Attack heading: 290°
 - Dive angle up to -30°
 - Speed: 700Km/H
 - 2 sec burst max
 - Double burst authorized
- Rockets
 - Attack heading: 190X°
 - Dive angle between -10° and -30°
 - Ammunitions: Exercise, mark and HE
- High Drag Bomb
 - Minimum delivery height: 50m
 - Bombs: 2 max for a single delivery
- Low drag Bombs
 - Minimum delivery height: 150m
 - Bombs: 8 max for FAB-100, 4 for FAB-250 and 2 for FAB-500

DCS MIG-21bis

External stores



Air to Air		5	4	2	1	
R-13M APU-13MT	IR guided - 265 lbs/120 kg - 4 nm/7 km		X	X		
R-13M1 APU-13MT	IR guided - canard control - revised shape - 269 lbs/122 kg - 4 nm/7 km		X	X		
R-3R APU-13MI	Semi Active Radar Homing - 247 lbs/112 kg - 4 nm/7 km	X	X	X	X	
R-3S APU-13MI	IR guided - 227 lbs/103 kg - 4 nm/7 km	X	X	X	X	
R-55 APU-7	IR guided - 231 lbs/105 kg - 3 nm/6 km	X	X	X	X	
R-60	IR guided - uncooled seeker - 130 lbs/59 kg - 4 nm/8 km	X	X	X	X	
R-60 x 2	IR guided - uncooled seeker - 269 lbs/122 kg - 4 nm/8 km	X	X	X	X	
R-60M	IR guided - cooled seeker - 130 lbs/59 kg - m 2 - 4 nm/8 km	X	X	X	X	
R-60M x 2	IR guided - cooled seeker - 269 lbs/122 kg - 4 nm/8 km	X	X	X	X	
RS-2US APU-7	Semi Active Radar Homing - 231 lbs/105 kg - 3 nm/6 km	X	X	X	X	
Missiles		4		2		
Kh-66 Grom (21) APU-68	Radar guided - air to ground - 661 lbs/300 kg - 5 nm/10 km	X		X		
Rockets - unguided		5	4	2	1	
S-24A	Standard fragmentation warhead - 518 lbs/235 kg - 2 nm/3 km	X	X	X	X	
S-24B	Bunker Buster - blast-fragmentation warhead - 518 lbs/235 kg - 2 nm/3 km	X	X	X	X	
UB-16UM - 16 S-5M	16 x fragmentation - light armoured, personnel - 265 lbs/120 kg - 1 nm/2 km	X	X	X	X	
UB-32M - 32 S-5M	32 x fragmentation - light armoured, personnel - 505 lbs/229 kg - 1 nm/2 km	X		X		
Bombs		5	4	2	1	
BL755	Cluster bomb - armoured vehicles, tanks - 582 lbs/264 kg		X	X		
BetAB-500	Penetration bomb - concrete piercing, runways, bunkers - 948 lbs/430 kg		X	X		
BetAB-500ShP (with parachute)	Penetration bomb - concrete piercing, runways, bunkers - 935 lbs/424 kg		X	X		
FAB-100	General purpose bomb - 220 lbs/100 kg	X	X	X	X	
FAB-100 x 4	General purpose bomb -1025 lbs/465 kg		X	X		
FAB-250	General purpose bomb - 551 lbs/250 kg	X	X	X	X	
FAB-250 M54 TU	General purpose bomb - 518 lbs/235 kg - with parachute for low level bombing	X			X	
FAB-500 M62	General purpose bomb - 1116 lbs/507 kg		X	X		
RBK-250 PTAB-2.5M	Multipurpose cluster bomb - general, armoured targets - 602 lbs/273 kg	X	X	X	X	
RBK-500 PTAB-10-5	Anti-personnel/anti-material cluster bomb - personnel, tanks - 941 lbs/427 kg		X	X		
SAB-100	Illumination bomb - 8 flares - 220 lbs/100 kg - burning 2 mins - drop at 1000-3000m	X	X	X	X	
Tactical nuclear bomb		3				
RN-24	10 kT warhead - 1036 lbs/470 kg (Hiroshima was approximately 15 kT)	X				
RN-28	1 kT warhead - 573 lbs/260 kg	X				
PODS		7	6	4	3	2
Smoke - white - 21	66 lbs/30 kg	X				
ASO-2	Chaff / Flare dispenser - 49 lbs/22 kg	X				
SPRD-99	SPRD start rockets - 1102 lbs/500 kg - Rocket-assisted Takeoff	X				
UPK-23-250	GUN POD - twin barreled - 23 mm caliber - 250 rounds capacity - 481 lbs/218 kg - 1 nm/2 km - *)			X		X
SPS-141-100(21)	Combined ECM Jammer + Flare/Chute dispenser - 331 lbs/150 kg				X	
Fuel Tank		5		3		1
Fuel Tank 490 L (21)	961 lbs/436 kg	X				X
Fuel Tank 490 L Central (21)	961 lbs/436 kg			X		
Fuel Tank 800 L (21)	1519 lbs/690 kg			X		
Internal gun GSh-23	GUN - twin barreled - 23 mm caliber - 250 rounds capacity - 1 nm/2 km - *) **)	2015, March				

2015, March

All weights in lbs are from the MISSION EDITOR

Mig 21Bis Pilot's Flight Operating Instructions

*) Ground targets - minimum initial range for firing 1200 m or 1300 m with a 40° dive angle

**) Air combat - the best precision in firing is achieved within the range of 250 to 350 m

Laser / radar ranging

- Target well identified
- Stop illumination as soon as impact noted or 10s overturn of theoretical illumination duration

Chaffs and Flares

- Chaffs and Flares are authorized over the sea

Radio procedures

- Contact ATTILA (RCO) 2 minutes before BELYY or PO
 - ◆ MENU + AUTRE + CONTACTER ATTILA POUR BELYY/PO
- RCO answers :
 - ◆ Colour on the range and QFE
 - ◆ IFF 3
 - ◆ Enter or holding
- First run is a recce
 - ◆ Contact ATTILA after the recce or range for
 - Gun / Bombs / Missiles / Rockets
 - ◆ Contact ATTILA before next range for
 - Noria / South Pattern / North Pattern
 - ◆ Contact ATTILA when:
 - You leave the range

AAA training

According to SAM system (inert) and AAA located over air to ground range and other specific scenario may be applied

- Anapa: Canal 02

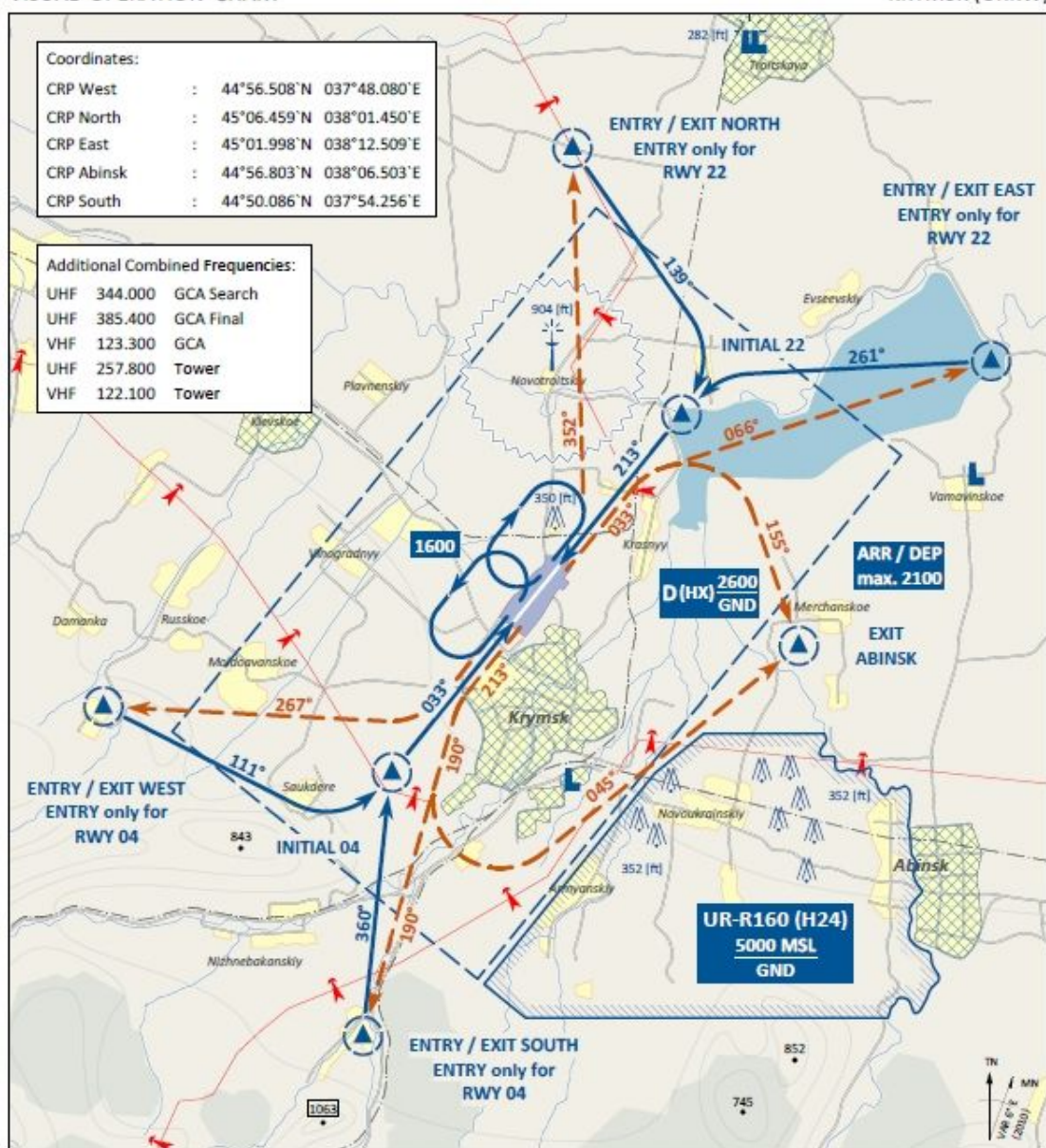


ARR/DEP JET RWY 04/22
VISUAL OPERATION CHART

VAD 16

-28-

KRYMSK (URKW)



Visual Approach and Departure Chart for DCS A-10C Warthog Flight Simulator

REV 3.6.0 - 03.05.2013 © GP - WWW.10TIGERFLIGHTS.DE - WWW.A10C.COM

PSN THR	VAR	ARP	ELEV	Scale 1:200'000
RWY 04 44° 57.562' N 037° 59.026' E	6° E	44° 58.073' N	66 [ft]	0 1 2 3 4 5 6 7 [km]
RWY 22 44° 58.584' N 038° 00.369' E	(2010)	037° 59.697' E	20 [m]	0 1 2 3 [NM]

1. Landing instructions shall be requested latest 2 minutes prior to reaching ENTRY CRP
2. Avoid overflying of densely populated areas
3. Warning: EXIT NORTH RWY 04: Procedures not usable for HIRTA sensitive ACFT
4. ACFT leaving CTR via EXIT ABINSK RWY 22 have to proceed exactly on track to avoid restricted area UR-R160.

Tower	Radar	Final - Precision	TACAN	ILS		
124.000 MHz						

ARR/DEP JET RWY 04/22

KRYMSK (URKW)

Radios:

Krasnodar controle: 138.000 AM - Canal 19

Anapa controle: 145.000 AM - Canal 10

RCO (ATTILA): 149.000 AM - Canal 7

Copyright 2015 - Tough946

Mail: tough976@gmail.com